

MERO Low Access Floor / Refurbishing

Innovative solutions from one source

Development

Consulting

Planning

Manufacturing

Installation

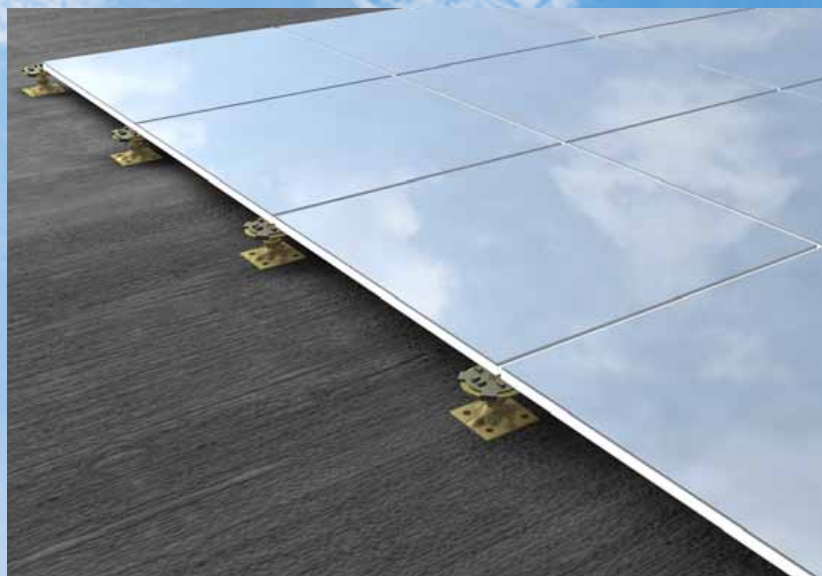
Access floor

Hollow floor

Floor covering and

Installation

Services



Floor systems

Technical data: Low Access Floor

- Access to the installation plenum at any time and place without noise and dust as well as without disturbing the operational procedure.
- Huge installation plenum due to module 600x600 mm providing enough space for future under floor services.
- Floor panels with electrical outlets can be removed and reinstalled wherever necessary. Additional outlets can be made at any other place allowing easy adaption to office reconfigurations.
- Very low installation height
- Particularly suitable for refurbishing

Dimensions:	600 x 600 mm
Panel thickness: (without covering)	~ 17,8 mm
Surface:	galvanized steel sheet
Panel bottom:	galvanized steel sheet
System weight:	~ 40 kg/m ²
(without covering, floor height 250 mm)	
Panel weight:	~ 13,5 kg/pc
Panel material:	fibre-reinforced calcium sulfate

Substructure

Module:	600 x 600 mm
Pedestal material:	galvanized steel sheet
Construction height: (without covering)	from ~ 40 mm

Load values

Concentrated load	2.000 N
Ultimate load:	> 4.000 N

Electrostatic

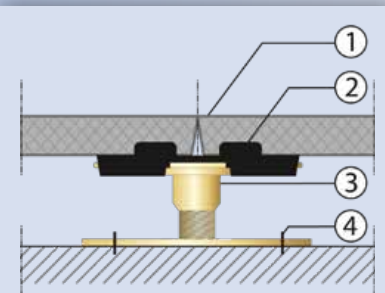
DIN EN 1081 / DIN IEC 61340-4-1	
depending on floor covering:	R_2 or $R_G > 10^5$ Ohm
without floor covering:	R_2 or $R_G > 10^9$ Ohm
	(conductive type on request)

Fire protection

Building material class:	
acc. to DIN EN 13501 T1:	A1

Thermal conductivity

Base material:	~ 0,44 W/mk
----------------	-------------



1. Access floor panel
2. Pedestal gasket
3. Access floor pedestal
4. Base plate glued to the subfloor, dowelled on request

